

صبيحة

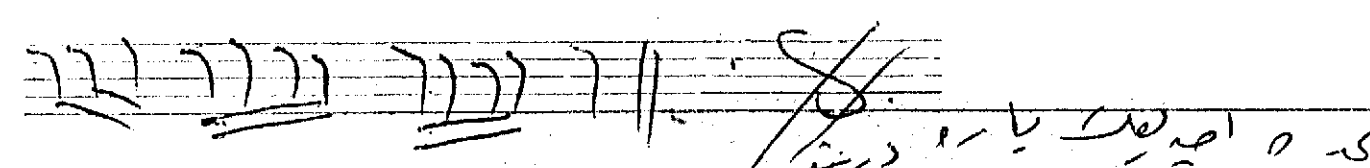
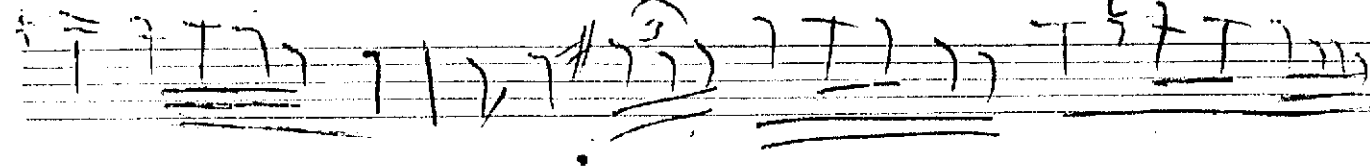
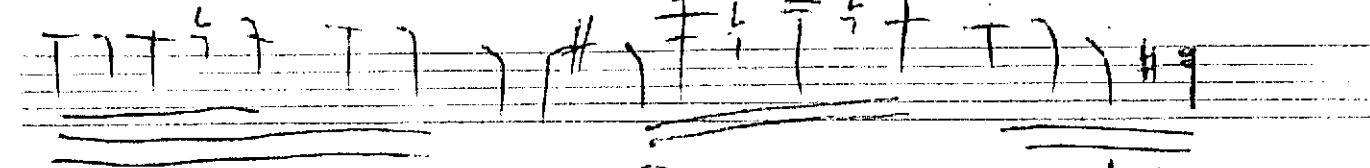
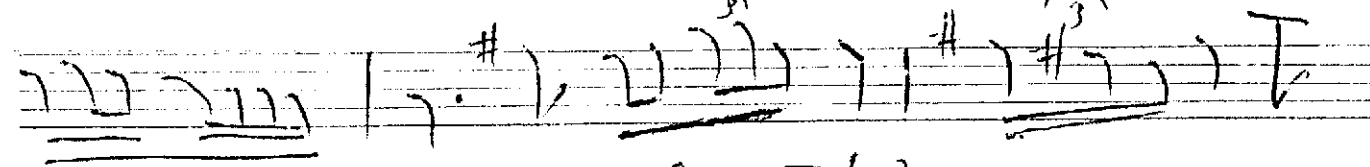
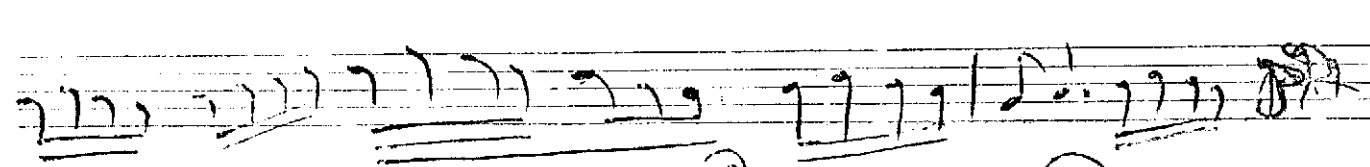
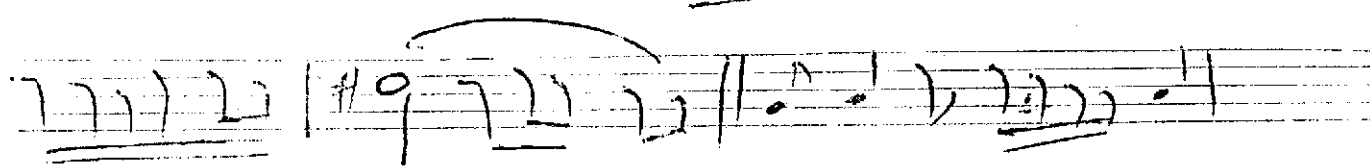
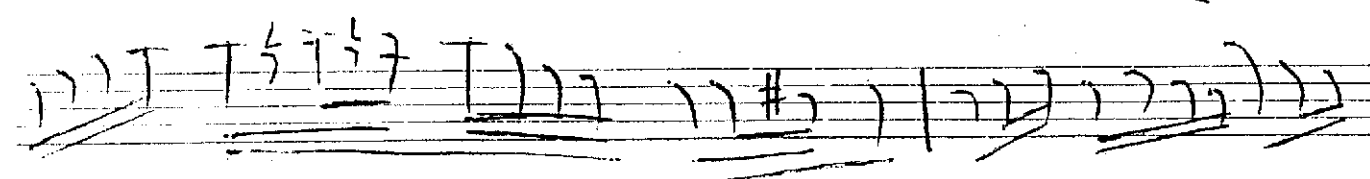
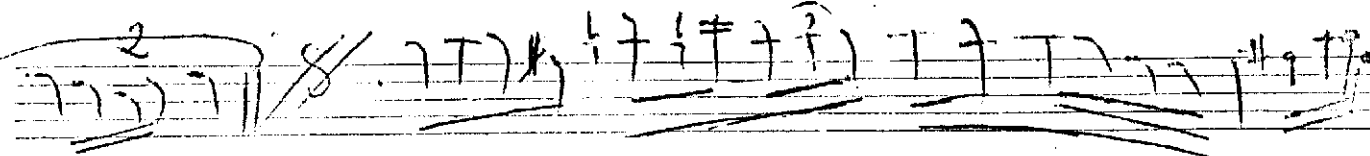
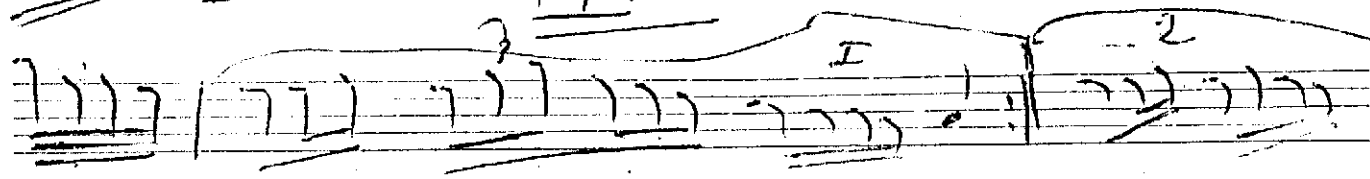
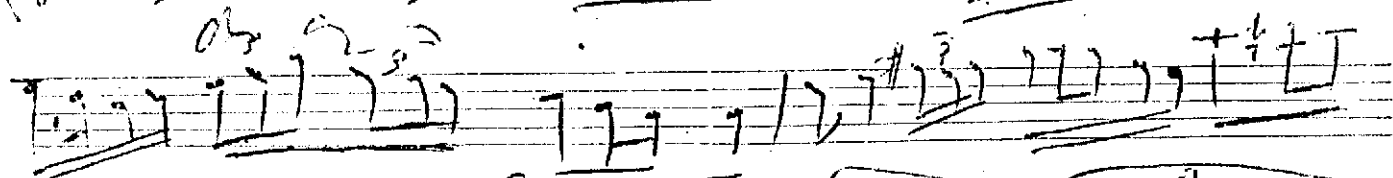
Musik für Vokal

Hicay

Kal

Bim

de a^s



M. Birtan

Handwritten musical notation on a five-line staff, continuing the piece. It features a treble clef, a key signature of one sharp, and a common time signature. The notation includes various note values, rests, and slurs, with some notes marked with 'Kal' and 'Bim' above them.